

The Eye-D Insert

Sub-conjunctival
Sustained Release Insert
for Glaucoma Management

A Bio-Light (TLV:BOLT) Company



Eye-D Technology

A sub-
conjunctival bio-
absorbable insert
platform

First aiming for
glaucoma with
proprietary
Latanoprost

Treatment
period of 3-6
months

505(b)(2)
combination
product assigned
to CDER

Granted
US & EU
patents

Glaucoma Management Challenge

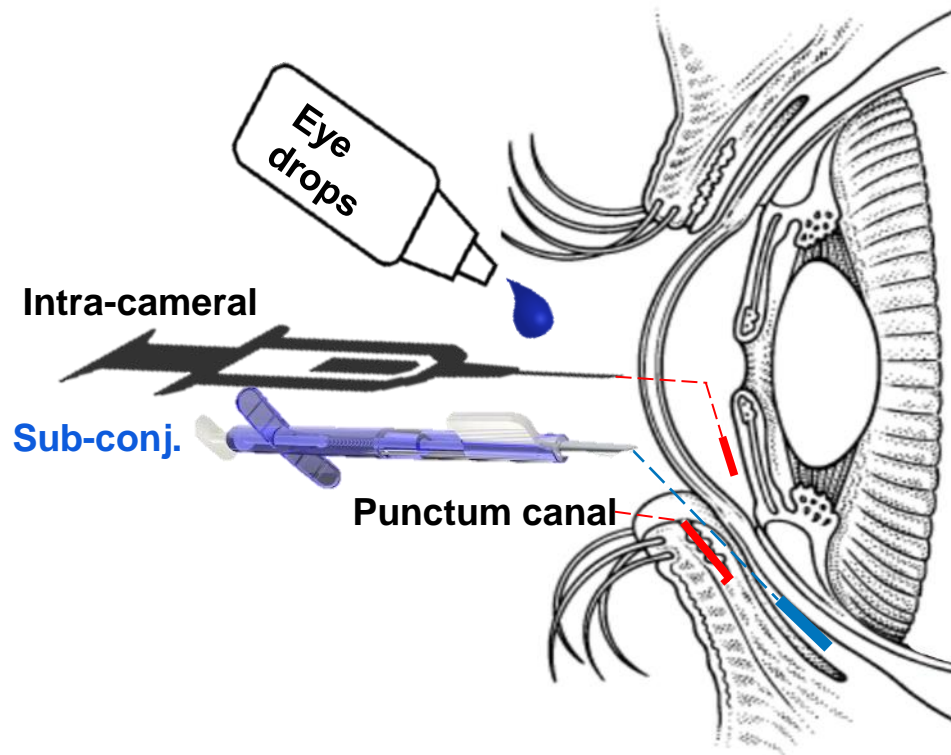
- 1st cause of irreversible blindness worldwide
- Chronic, lifelong treatment
- Disease progression is irreversible

- A plethora of reasonably effective topical treatments available

- Treatment compliance as low as 25%
- Impacts quality of life

Standout in the Marketplace

Sub-Conjunctival;
As close to treatment zone
without penetrating the eye



Phase I/IIa Outcomes

Dose defining, single blinded, randomized, under FDA ; US sites only

Non-biodegradable



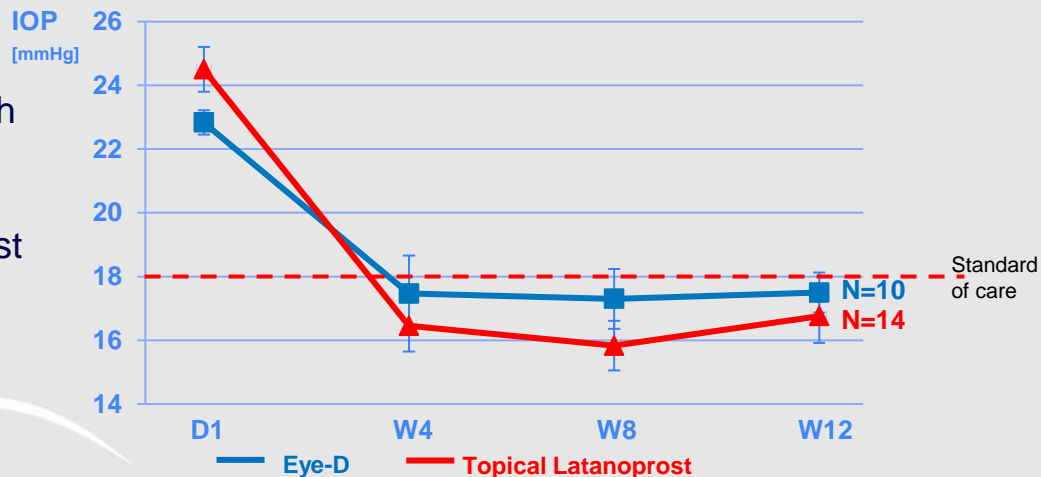
Safety demonstrated

No SAEs
>90% of AEs mild
All transient

Efficacy demonstrated

Diurnal IOP @ 3m <18mmHg
Within 1.5mmHg of Xalatan®

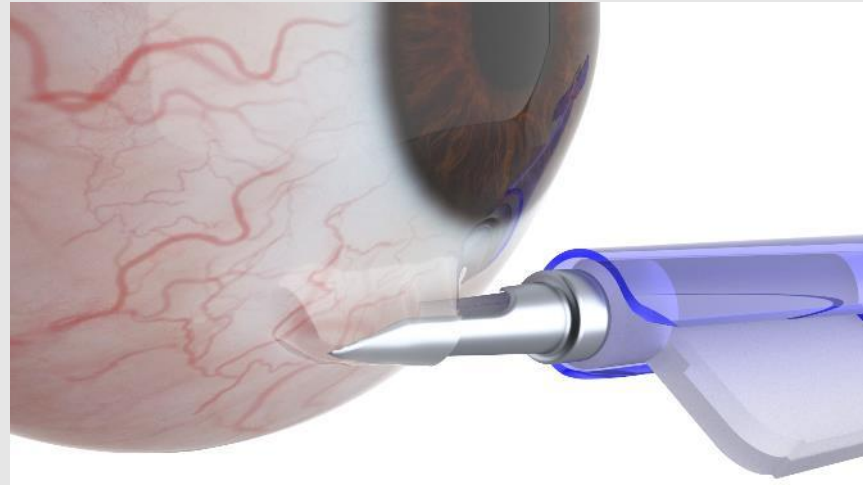
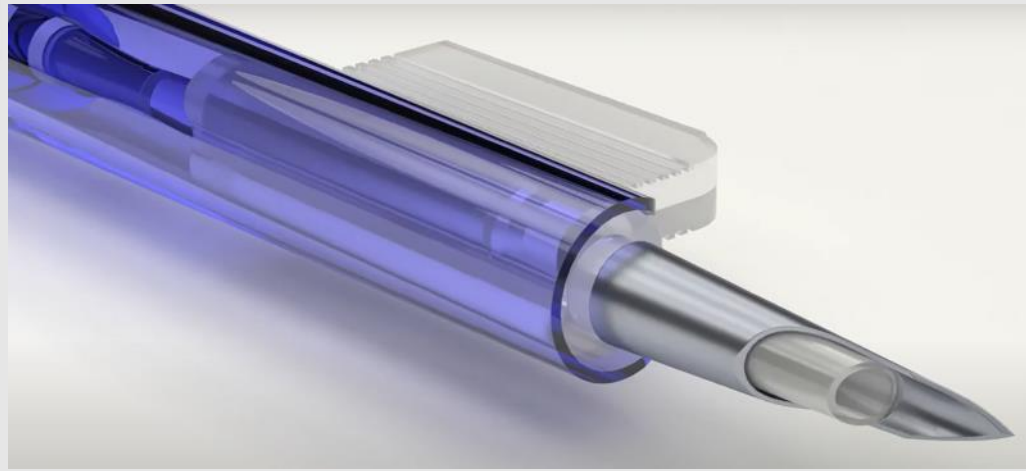
Eye-D High Dose vs. Topical Latanoprost



Inserters's Design & Use

Off-the-shelf IOL injector ;
Repurposed

Novel bayonet design



Simplified One-motion Insertion

Eye-D 2.0 – Usability Emphasis

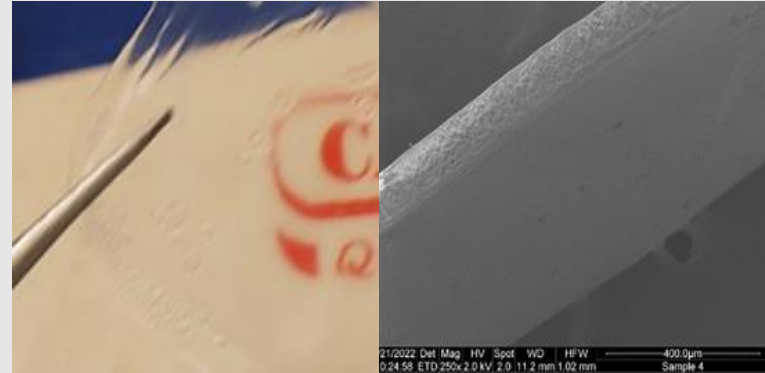
New patent application



Bio-absorbable matrix

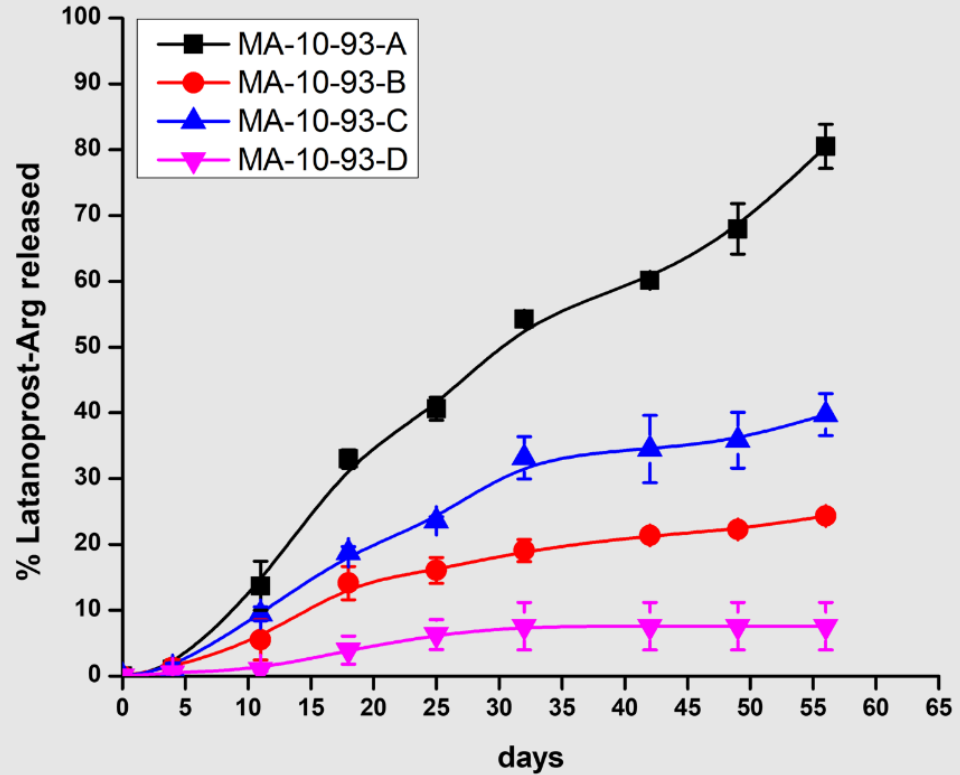
Leading Israeli researcher

POC by April 2024







Known polymer, approved in ocular products

Early Release Profiles



Preliminary release profiles of 0.5% w/w loaded latanoprost-arginine from at various matrix compositions

Competitive Landscape

	Eye-D	Evolute	Durysta - Bioabsorbable	iDose
Treatment location	Sub-conjunctival insert	Punctum canal plug	Intra-cameral injection	Intra-cameral insert
Duration	Multiple X >3 months	Multiple X 3 months	Single X 3 months	Single X 12 months
API	Latanoprost (proprietary)	Latanoprost	Bimatoprost	Travoprost
Ownership				
OR required	No	No	No	Yes
Cease treatment	Easy	Easy	Complex / impossible	Surgical
Development stage	Phase-II	Phase-II	Commercial	Commercial
Comments	Bioabsorbable insert in development		Market penetration efforts	Limited to cataract surgery only

Summary

**Solving
glaucoma's
compliance
challenge**

**Cost effective
solution**
Insert <\$10
Inserter <\$20

**>3 months
bio-absorbable
prototype in
validation**

In-office procedure
Combined
treatment & inserter
technology

**Proven
safety & efficacy**
non-absorbable
Phase I/IIa

Future Applications

- Apply the platform & inserter to additional ophthalmic applications

- Focus on approved ophthalmic API as a repurposing or IP extension

- Potential candidates:
confidential

Thank You!

Yoni Manor, CEO

ymanor@vi-sci.com

+972-54-6689445

